

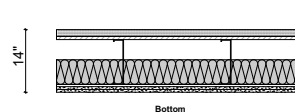
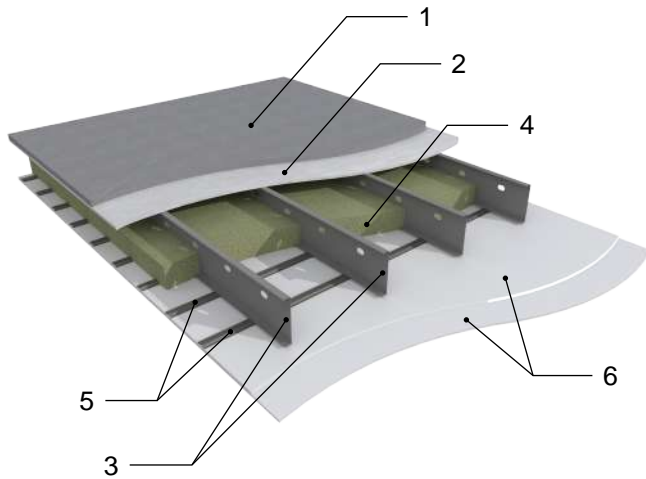


Fire Rated Assembly: B-015

90 Minutes Fire Rated Construction
QAI Certified and Listed

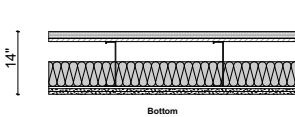
Whole Assembly Performance

R-32; T-Bridge 5 of 10; STC 58 (Interpolated)



Assembly Details:

1. Optional 1.5" Gypcrete
2. 18mm MEGCRETe Sheathing
3. Steel Joists 10" x 2" - 16 Gauge @ 24" OC
4. 140mm Fiberglass Insulation - Classified as Non-Combustible (ASTM E136 or CAN ULC S114)
5. 25 MSG Galv. Steel 1/2" Deep @ 12" OC
6. 2 Layers 5/8" Type X Gypsum

Type Mark	Visual	Details	Description
B-015		<p>SHLD FRA B-015 90 Minutes Fire Rated Construction QAI Certified and Listed</p> <p>Whole Assembly Performance R-32; T-Bridge 5 of 10; STC 58 (Interpolated)</p>	<ul style="list-style-type: none"> - Optional 1.5" Gypcrete - 18mm MEGCRETe Sheathing - Steel Joists 10" x 2" - 16 Gauge @ 24" OC - 140mm Fiberglass Insulation - Classified as Non-Combustible (ASTM E136 or CAN ULC S114) - 25 MSG Galv. Steel 1/2" Deep @ 12" OC - 2 Layers 5/8" Type X Gypsum